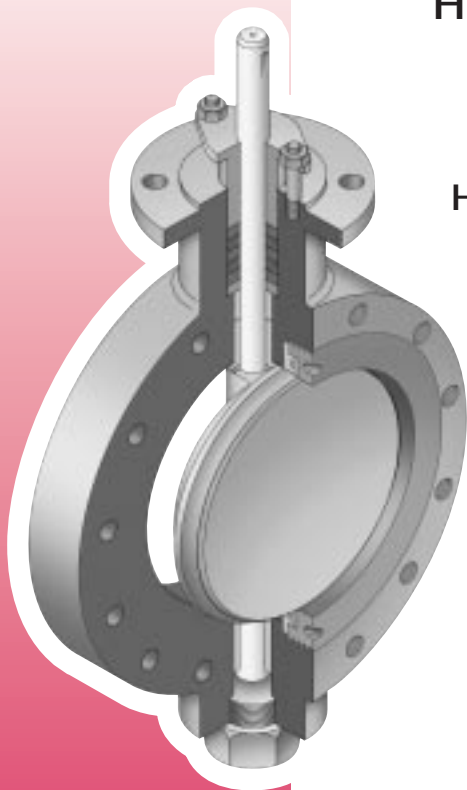




A Division of Hopkinsons



FIRESAFE HYPERSEAL BV 24000

High Performance
Butterfly Valves

150 & 300lbs



A Division of Hopkinsons

Longlands Industrial Estate, Ossett,
West Yorkshire WF5 9JF
TEL: 01924 275931 FAX: 01924 280026

In 1964 BATLEY was probably the first UK manufacturer of high pressure butterfly shut off valves incorporating a PTFE (Teflon) seal. This valve is now known as a high performance butterfly valve. With over thirty years experience the present Hyperseal valve has developed into a highly efficient valve for control and isolation duty.

The seal design and valve geometry combine to ensure a uniform 360° seal contact in the closed position and the double eccentric action moves the disc into and out of the seat with the minimum of wear and seating torque.

Due to the increased demands of the petrochemical & offshore industries the Hyperseal was developed into a "Firesafe" design which incorporates a metal secondary seal which will maintain a positive shut off in the event of the primary PTFE seal being destroyed in a fire.

The range of valve sizes in 150lb & 300lb are certified to BS 6755 part 2. The valves are fully rated to ANSI Class 150lb and 300lb in sizes up

to 1000mm with larger sizes available on special request. 300lb rated valves can also be supplied with 150lb rated trim to provide a more economical package.

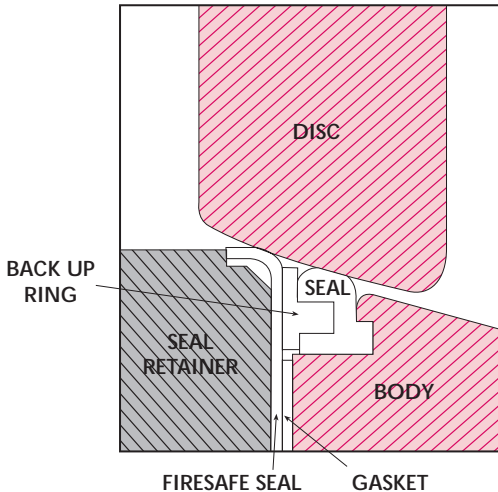
All valves can be supplied with alternative flange drillings such as BS 4504 PN 10/16/25 & 40, JIS, BS10, with others on special request.

Special valves can be supplied with higher rated bodies up to ANSI Class 2500lb but fitted with lower rated trim, this is particularly useful on control applications where the full shut off pressure is not required.

The Firesafe Hyperseal provides an economical package for both actuated on/off and control applications when fitted with a suitable operator.

The valve can be supplied with Wafer, Lugged and Double Flanged bodies and incorporating full and reduced bore sizes to suit the application.

FIRESAFE HYPERSEAL



Sizes 50mm to 1000mm CLASS 150LB

VALVE SIZE	A	B	C ₁ WAFER	C ₂ FLANGED	D	E	F	G	H	J	K	L	M
50	44	95	43	108	95	70	12	67	44	11	4	M8	49
80	69	129	47	114	120	95	15	67	44	11	4	M8	74
100	90	160	52	127	143	120	20	64	44	15	4	M10	96
125	117	186	56	140	165	145	20	67	44	15	4	M10	120
150	140	212	58	140	205	180	20	108	66	16	4	M12	143
200	189	270	64	152	238	210	25	108	66	16	4	M12	194
250	233	328	72	165	260	255	30	108	66	18	4	M16	240
300	284	383	81	178	300	285	35	108	66	18	4	M16	288
350	327	426	92	190	310	325	35	108	66	18	4	M16	317
400	377	474	102	216	320	340	40	108	66	32	4	M16	363
450	426	534	114	222	370	350	45	108	70	32	4	M20	409
500	472	590	127	229	418	410	45	165	97	17	8	M16	455
600	567	692	154	267	490	510	60	165	103	-	-	-	547
700	667	800	172	292	560	580	70	165	103	-	-	-	647
750	725	857	180	292	590	610	80	200	123	-	-	-	705
800	770	914	190	318	610	620	80	200	123	-	-	-	750
900	845	1025	241	330	620	630	90	200	123	-	-	-	835
1000	945	1120	241	410	630	640	100	200	123	-	-	-	925

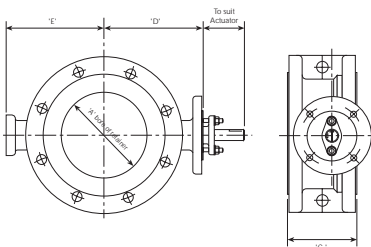
Sizes 50mm to 1000mm CLASS 300LB

VALVE SIZE	A	B	C ₁ WAFER	C ₂ FLANGED	D	E	F	G	H	J	K	L	M
50	44	95	43	150	95	70	12	67	44	11	4	M8	49
80	69	129	47	180	120	95	15	67	44	11	4	M8	74
100	90	160	52	190	143	120	20	67	44	15	4	M10	96
125	117	186	56	200	165	145	20	67	44	15	4	M10	120
150	140	212	58	210	205	180	25	108	66	16	4	M12	143
200	189	270	64	230	238	210	30	108	66	16	4	M12	194
250	233	328	72	250	260	255	35	108	66	18	4	M16	240
300	284	383	81	270	300	285	40	165	66	18	4	M16	288
350	317	412	127	290	354	360	50	165	97	36	4	M16	317
400	363	469	146	310	386	410	60	165	103	17	8	M16	363
450	409	533	160	330	418	440	65	165	103	17	8	M16	409
500	455	584	165	350	450	480	70	165	103	17	8	M16	455
600	547	692	181	390	515	560	80	165	103	22	8	M16	547
700	647	800	220	430	580	590	90	165	103	-	-	-	647
750	705	857	241	430	610	620	100	200	123	-	-	-	705
800	745	914	260	470	630	640	110	200	130	-	-	-	750
900	825	1022	270	510	655	665	120	220	130	-	-	-	825
1000	925	1085	270	550	680	690	130	220	130	-	-	-	925

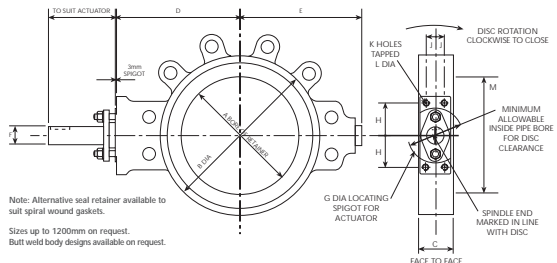
Dimensions shown as - on application.

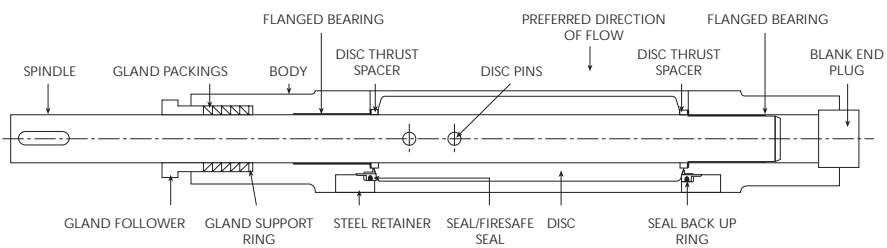
API 609 Face to Face dimensions for 300lb valves available on request.

DOUBLE FLANGED



WAFER/LUGGED



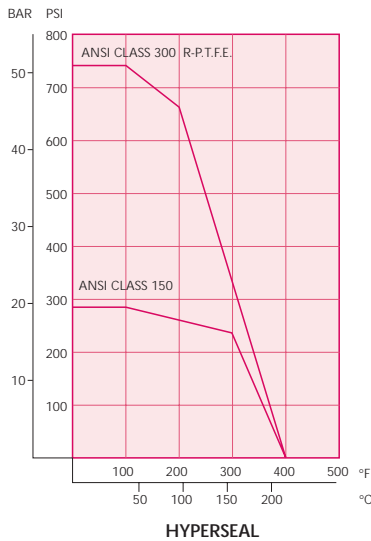


COMPONENT	CARBON STEEL	316 ST STEEL	AL-BRONZE	DUPLEX
Body	A216 WCB	A351 CF8M	BS1400 AB2	A890 4A
Disc	A216 WCB/A351 CF8M	A351 CF8M	BS1400 AB2	A890 4A
Shaft	17-4PH/316 SS	17-4PH/316 SS	Monel	25 CR Duplex
Pins	316	316	Monel	25 CR Duplex
Gland Follower	St Steel	St Steel	St Steel	St Steel
Gland Studs, Nuts & Washers	St Steel	St Steel	St Steel	St Steel
Gland Packings	PTFE	PTFE	PTFE	PTFE
Gland Ring	316 SS	316 SS	Monel	25 CR Duplex
Bearings	316/PTFE	316/PTFE	Bronze/PTFE	PTFE
Disc Spacers	316 SS	316 SS	Monel	25 CR Duplex
Blank End Plug	Carbon Steel	316 SS	Monel	25 CR Duplex
Seal Retainer	Carbon Steel	316 SS	Al-Bronze	25 CR Duplex
Seal Back Up Ring	316 SS	316 SS	316 SS	25 CR Duplex
Seal	R-PTFE	R-PTFE	R-PTFE	R-PTFE
Firesafe Seal	316 SS	316 SS	316 SS	25 CR Duplex

Alternative materials include: LCB, Monel, LG-2, Alloy 20, 316L, Titanium, Hastalloy, Inconel & Super Duplex.

Technical Standards

- Design: API 609, BS 5155, MSS SP68
- Pressure Testing: API 598, BS 6755 Part 1, FCI 70-2
- Wall Thickness: ANSI B16.34
- Face To Face Dimensions: BS 5155, API 609, DIN 3202, ISO 5752
- Quality Assurance: ISO 9001
- Firesafe: BS 6755 Part 2



Torques for Sizing Actuators - Inch-Pounds (R - P.T.F.E. Seat)

Actuator selection is dependent upon a number of variable factors such as pressure drop across the valve, seat and bearing friction torques, cryogenic temperatures and flowing media. The figures in the following table are based on standard valves and materials working in normal service conditions. A safety factor as recommended by the actuator manufacturer should be applied. Consult Batley Valve for cryogenic torque figures.

SIZES 50mm to 1000mm CLASS 150LB 285 DP

VALVE DIAM.	SPINDLE DIAM.	Pressure drop across valve in closed position (psi)				
		50	100	150	200	285
50	12	107	110	115	119	126
80	12	220	231	241	252	270
100	15	393	406	438	460	499
125	20	681	731	781	831	917
150	20	903	975	1047	1119	1241
200	25	1700	1863	2025	2188	2465
250	30	2622	2916	3210	3504	4003
300	35	3409	3919	4428	4937	5803
350	35	4675	5351	6026	6610	7850
400	40	7010	8110	9150	10080	11900
450	45	8910	10300	11900	13300	15800
500	45	11300	13100	14900	16700	19700
600	60	17100	20600	24000	27500	33500
700	70	23800	29100	34900	40600	50400
750	80	27800	35400	43100	50600	63600
800	80	32300	40900	49700	58300	72900
900	90	43900	55500	67100	78900	98200
1000	100	57500	74200	91000	110000	138000

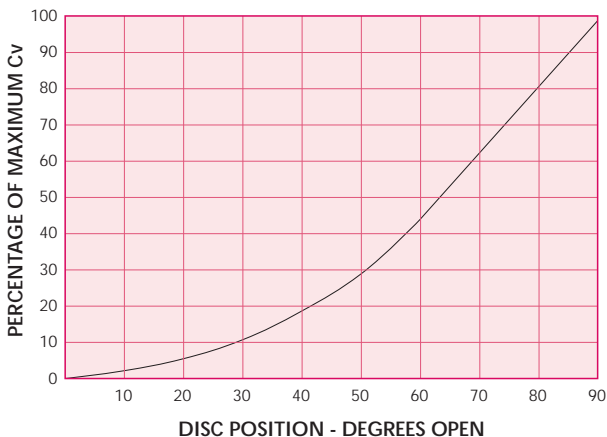
SIZES 50mm to 1000mm CLASS 300LB 740 DP

VALVE DIAM.	SPINDLE DIAM.	Pressure drop across valve in closed position (psi)				
		300	400	500	600	740
50	12	127	135	144	153	164
80	15	305	332	358	384	421
100	20	565	625	685	744	828
125	20	932	1032	1132	1232	1372
150	25	1416	1596	1776	1955	2207
200	30	2730	3130	3520	3900	4450
250	35	4400	5100	5780	6470	7430
300	40	6420	7580	8750	9950	11600
350	50	9950	11950	13850	15750	18500
400	60	15400	18600	21600	24700	29100
450	65	20400	24700	28900	33100	39300
500	70	26500	32100	37600	43000	50900
600	80	41500	50800	60100	69400	82300
700	90	62400	77200	91900	106700	110100
750	100	74100	96400	115200	135200	161000
800	110	95300	119200	143000	167000	201000
900	120	125000	155900	186700	217500	260000
1000	130	171000	213500	257900	355000	362000

316 shafts cannot be used without increasing size

Nominal Bore	CV Valves for Hyperseal (class 150) - Vane Angle								
	90°	80°	70°	60°	50°	40°	30°	20°	10°
50	89	73	55	40	28	18	11	5	3
80	226	185	140	102	70	45	27	14	7
100	402	330	249	181	125	80	48	24	12
125	642	526	398	289	199	128	77	39	19
150	1204	987	746	542	373	241	144	72	36
200	2190	1796	1358	986	679	438	263	131	66
250	3690	3026	2288	1661	1144	738	443	221	111
300	5483	4496	3399	2467	1700	1097	658	329	164
350	6924	5678	4293	3116	2146	1385	831	415	208
400	9199	7543	5703	4140	2852	1840	1104	552	276
450	11736	9624	7276	5281	3638	2347	1408	704	352
500	14215	11656	8813	6397	4407	2843	1706	853	426
600	20792	17049	12891	9356	6446	4158	2495	1248	624
700	29395	24104	18225	13228	9112	5879	3527	1764	882
750	34019	27896	21092	15309	10546	6804	4082	2041	1021
800	38900	31898	24118	17505	12059	7780	4668	2334	1167
900	46066	37774	28561	20730	14280	9213	5528	2764	1382
1000	60079	49265	37249	27036	18624	12016	7209	3605	1802

Nominal Bore	CV Valves for Hyperseal (class 300) - Vane Angle								
	90°	80°	70°	60°	50°	40°	30°	20°	10°
50	89	73	55	40	28	18	11	5	3
80	226	185	140	102	70	45	27	14	7
100	383	314	237	172	119	77	46	23	11
125	642	526	398	289	199	128	77	39	19
150	1147	941	711	516	356	229	138	69	34
200	2086	1711	1293	939	647	417	250	125	63
250	3515	2882	2179	1582	1090	703	422	211	105
300	5222	4282	3238	2350	1619	1044	627	313	157
350	5885	4826	3649	2648	1824	1177	706	353	177
400	7819	6412	4848	3519	2424	1564	938	469	235
450	9976	8180	6185	4489	3093	1995	1197	599	299
500	12083	9908	7491	5437	3746	2417	1450	725	362
600	17673	14492	10958	7953	5479	3535	2121	1060	530
700	24986	20489	15491	11244	7746	4997	2998	1499	750
750	28916	23711	17928	13012	8964	5783	3470	1735	867
800	33065	27113	20500	14879	10250	6613	3968	1984	992
900	39156	32108	24277	17620	12138	7831	4699	2349	1175
1000	51067	41875	31662	22980	15831	10213	6128	3064	1532



Recommended Duty
 On/Off: 0-90°
 Control: 0-70°

The Company's policy is one of continuous research and development and we therefore reserve the right to alter or modify products and specifications without prior notice.